

1/70

INTERIM DATA SHEET

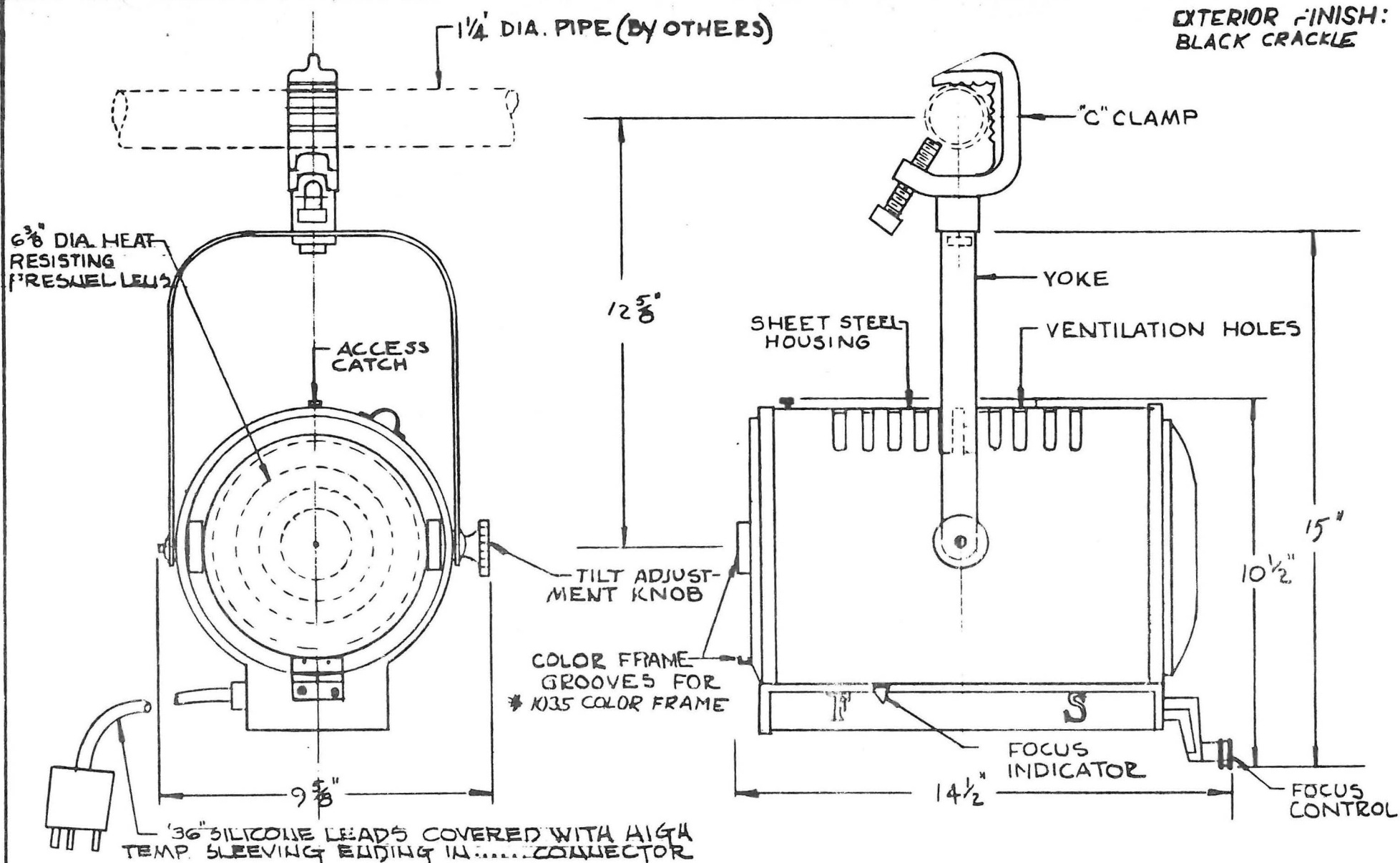
Furnish Fresnel lens spotlights as herein specified, consisting of the following:

A sheet steel shell housing reinforced for highest unit strength and masked with efficient light baffles; supported by an iron yoke with spring tension tilt adjustment, and of sufficient length to allow 360 degree rotation; a heat resistant tilt locking knob; cast aluminum rear crank with a heat resistant knob and a front heat resistant knob connected to a cold rolled steel manganese phosphate plated spindle fitted in a slide guide for focus adjustment; spot and flood position indicator on housing side; an Alzak<sup>®</sup> aluminum elliptical reflector on a movable carriage; color frame grooves; a safety chain loop; a medium two pin socket, type TP-4, for a Tungsten - Halogen 500 watt T4 or 750 watt T5 lamp; a 6-3/8" Pyrex<sup>®</sup> heat resisting Fresnel lens in a bottom hinged front door for easy relamping; and 36" Teflon insulated leads properly stripped and tinned within a high temperature fabric sleeve and fitted with a 20 ampere, \_\_\_\_\_ pole, male \_\_\_\_\_ connector. Each unit shall be equipped with a "C" pipe clamp.

Using an EHC 500 watt, 150 hour lamp, this unit shall produce a field angle of 18 degrees in the spot position and 53 degrees in the flood position which equals or exceeds 36,400 candlepower in the spot position and 13,000 candlepower in the flood

position. Using an EHF 750 watt, 250 hour lamp, this unit shall equal or exceed 54,600 candlepower in the spot position and 13,900 candlepower in the flood position.

Units shall be Kliegl #3508 Quartz Fresnel Spotlights



#### LAMPS

EAD 500W 2000HR  
 EAB 500W 500HR  
 EAC 500W 150HR  
 EHG 750W 2000HR  
 EAF 750W 200HR

lighting	NEW YORK LOS ANGELES	JOB	CAT. #	3508	S.O. #	
			SCALE	1/4" = 1"	REF.	
DESCRIPTION:  #3508-6 3/8 FRESNEL  QUARTZ-IODINE LAMP SERIES			DATE	12/18/67	DATE	
			ORIG. DWG. # 4708		JOB DWG. #	

1/70

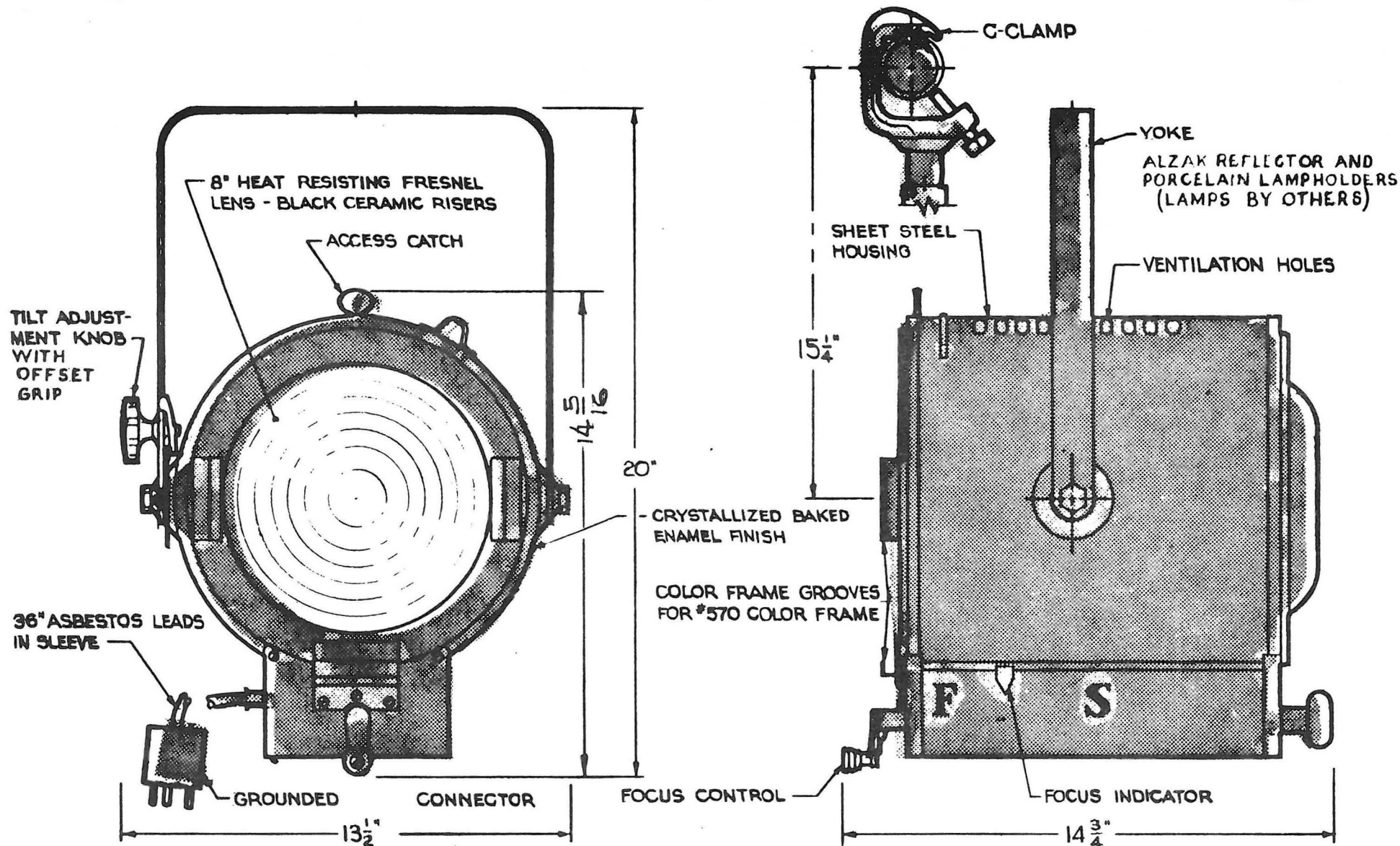
INTERIM DATA SHEET

Furnish Fresnel lens spotlights as herein specified, consisting of the following:

A sheet steel shell housing reinforced for highest unit strength and masked with efficient light baffles; supported by an iron yoke with spring tension tilt adjustment, and of sufficient length to allow 360 degree rotation; a heat resistant knob for pressure actuated tilt locking; cast aluminum front crank with heat resistant knob and a rear heat resistant knob connected to a cold rolled steel manganese phosphate plated spindle fitted in a slide guide for focus adjustment; spot and flood position indicator on housing side; an Alzak® aluminum spherical reflector on a movable carriage; color frame grooves; a safety chain loop; two single pole recessed contact sockets, type S-3, for a Tungsten - Halogen 1000 watt T6 lamp; an 8" Pyrex® heat resisting Fresnel with black ceramic risers in a bottom hinged front door for easy relamping and 36" silicone rubber insulated leads properly stripped and tinned within a high temperature fabric sleeve and fitted with a 20 ampere \_\_\_\_\_ pole, male \_\_\_\_\_ connector. Each unit shall be equipped with a "C" pipe clamp.

Using an FER 1000 watt, 300 hour lamp, this unit shall produce a field angle of 15 degrees in the spot position and 52 degrees in the flood position which equals or exceeds 83,900 candlepower in the spot position and 20,900 candlepower in the flood position.

Units shall be Kliegl #3518 Quartz Fresnel Spotlights



EXTERIOR FINISH: BLACK CRACKLE

LAMPS	lighting 32-32 48TH AVE. L.I.C.1. NEW YORK	JOB:	CAT # 3518	SO #
DWT 1000W 2000HR	<b>KLIEGL BROS.</b>		SCALE 1/4"=1"	REF.
EHS 1000W 500HR	DESCRIPTION:		DATE 2/9/65 SS	DATE
FER 1000W 300HR	<b>3518 8" FRESNEL SPOTLIGHT</b>		ORIG. DWG. #	JOB DWG #
DWS 1000W 30HR.	<b>QUARTZ - IODINE LAMP SERIES</b>		<b>3804</b>	

1/70

INTERIM DATA SHEET

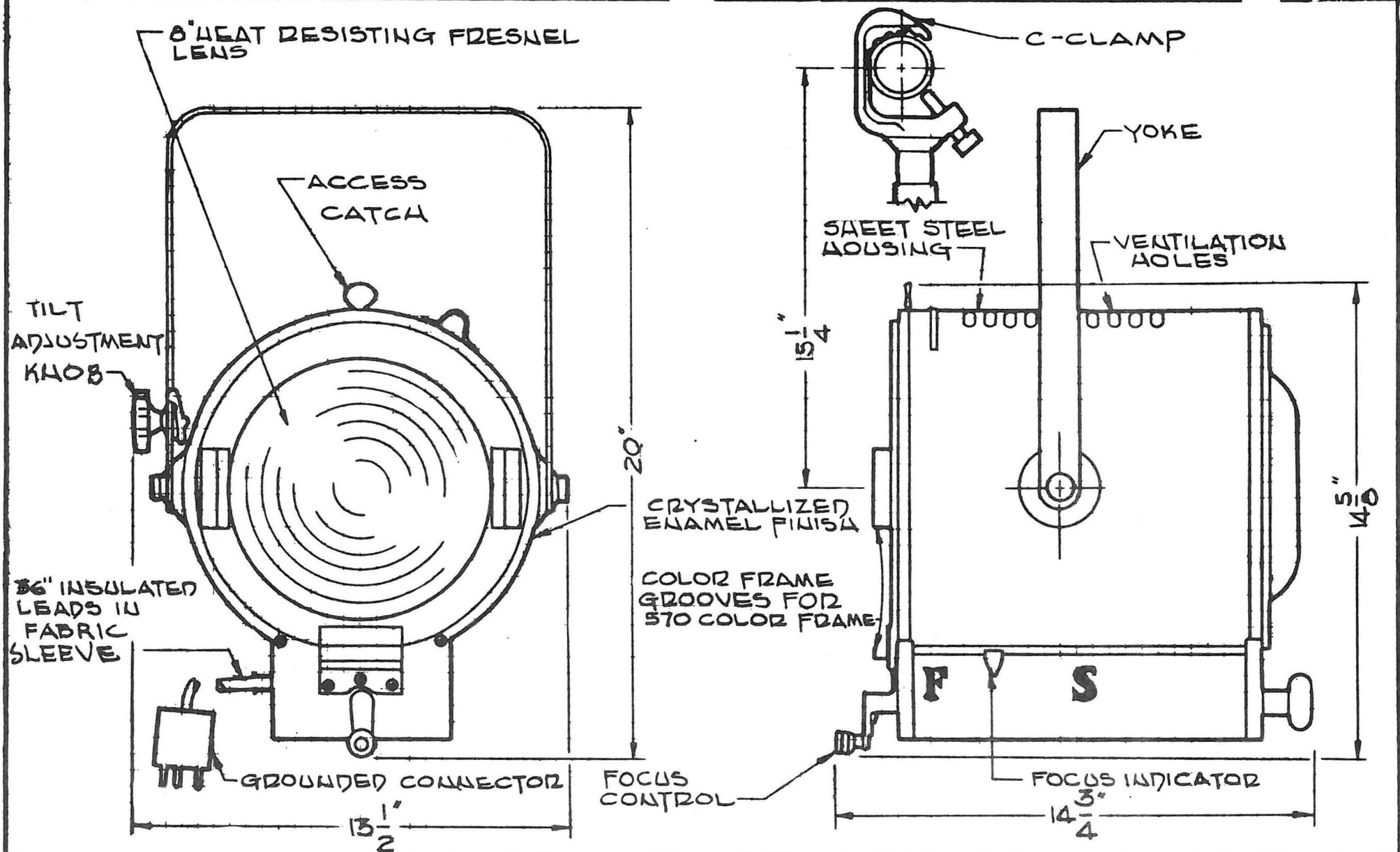
Furnish Fresnel lens spotlights as herein specified, consisting of the following:


A sheet steel shell housing reinforced for highest unit strength and masked with efficient light baffles; supported by an iron yoke with spring tension tilt adjustment and of sufficient length to allow 360 degree rotation; a heat resistant knob for pressure actuated tilt locking; cast aluminum front crank with a heat resistant knob and a rear heat resistant knob connected to a cold rolled steel manganese phosphate plated spindle fitted in a slide guide for focus adjustment; spot and flood position indicator on housing side; an Alzak® aluminum elliptical reflector on a movable carriage; color frame grooves; a safety chain loop; two single pole recessed contact sockets, type S-3, for a Tungsten - Halogen 1000 watt T6 lamp; an 8" Pyrex® heat resisting Fresnel lens in a bottom hinged front door for easy relamping; and 36" silicone rubber insulated leads properly stripped and tinned within a high temperature fabric sleeve and fitted with a 20 ampere, \_\_\_\_\_ pole, male \_\_\_\_\_ connector. Each unit shall be equipped with a "C" pipe clamp.

Using an FER 1000 watt, 300 hour lamp, this unit shall produce a field angle of 12 degrees in the spot position and 40 degrees in the flood position which equals or exceeds 180,000 candlepower in the spot position and 27,000 in the flood position.

Units shall be Kliegl #3525 Quartz Fresnel Spotlights





LAMPS			NEW YORK LOS ANGELES	JOB	CAT. #	3525	S.O. #
	WATTS	HOURS					
FER	1000	300	 <b>KLIEGL BROS.</b>	<b>DESCRIPTION:</b> 3525 8" FRESNEL SPOTLIGHT QUARTZ-IODINE LAMP SERIES	SCALE	$\frac{1}{4} = 1"$	REF.
EHS	1000	500			DATE	1-19-70	DATE
DWT	1000	2000			ORIG. DWG. #	4093	JOB DWG. #
DWS	1000	30					

1/70

INTERIM DATA SHEET

Furnish Fresnel lens spotlights as herein specified, consisting of the following:

A sheet steel shell housing reinforced for highest unit strength and masked with efficient light baffles; supported by a steel yoke mounted on cast aluminum support bosses; a heat-dissipating wire-type tilt adjustment knob; front and rear heat resistant levers connected to an eccentric, cam operated slide focusing mechanism which moves from full spot to full flood position with 100 degrees travel of the adjusting levers; calibrated spot and flood position indicators on front and rear of housing; an Alzak® aluminum spherical reflector on a movable carriage mounted on 3/8" cold rolled steel rods; a fixture carrying handle; integral cast aluminum color frame grooves (3); a safety chain loop; a mogul bi-post socket for a Tungsten - Halogen 2000 watt T-11 lamp; a 10" Pyrex® heat resisting Fresnel lens with 9 risers and optically fluted back in a side hinged cast aluminum front door, with spring loaded pin type latch for easy relamping; and 36" asbestos covered leads properly stripped and tinned and fitted with a 20 ampere, \_\_\_\_\_ pole, male \_\_\_\_\_ connector. Each unit shall be equipped with a "C" pipe clamp.

Using an CYX 2000 watt, 200 hour lamp, this unit shall produce a field angle of 15 degrees in the spot position and 48 degrees in the flood position and which equals or exceeds 360,000 candlepower in the spot position and 28,000 candlepower in the flood position.





1/70

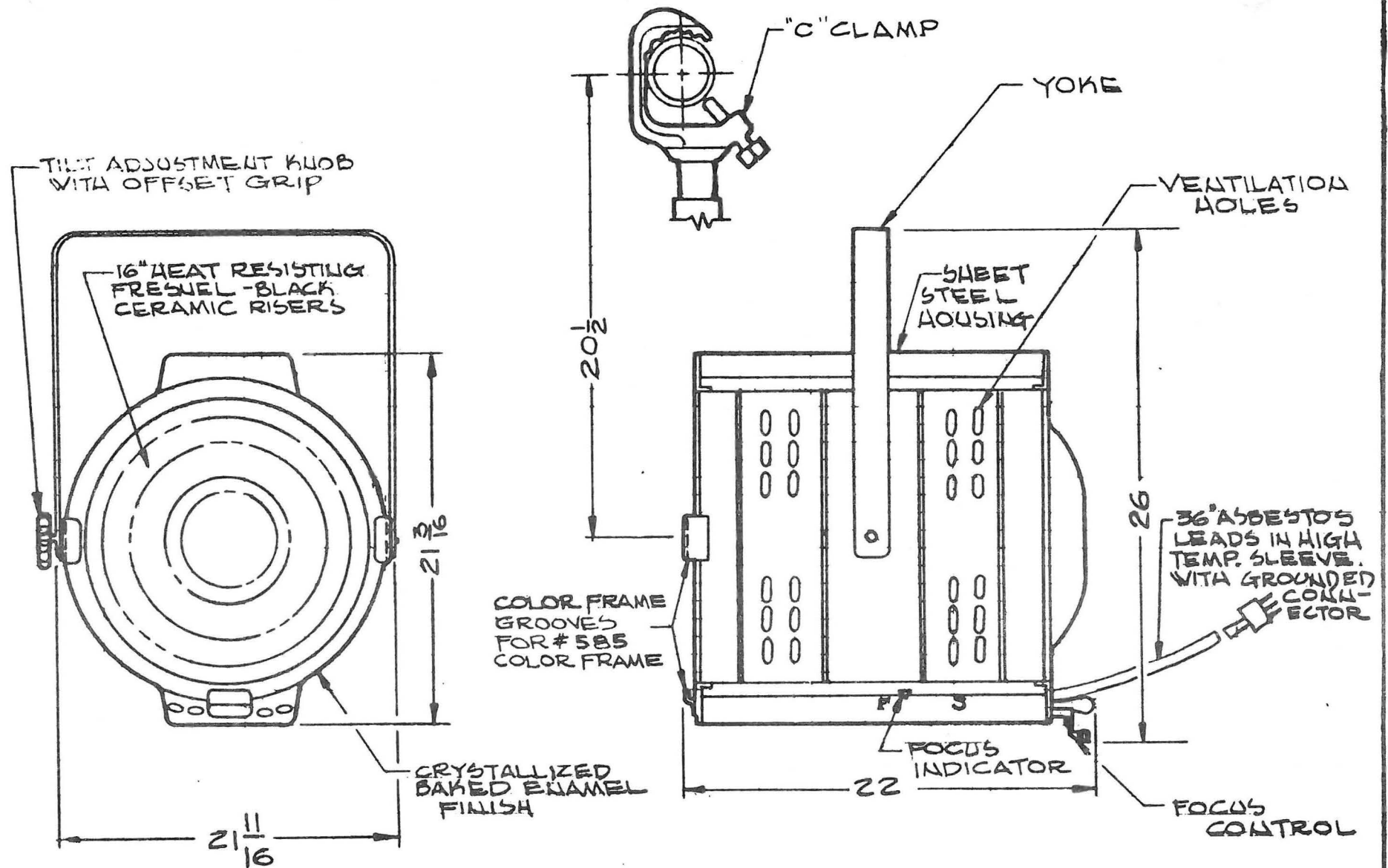
INTERIM DATA SHEET

Furnish Fresnel lens spotlights as herein specified, consisting of the following:

A sheet steel housing of double wall construction supported by an iron yoke with spring tension tilt adjustment and of sufficient length to allow 360 degree rotation; a heat-dissipating wire-type tilt adjustment knob; cast aluminum rear crank with a heat resistant knob and a bottom-front recessed cast aluminum knob both connected to an aluminum spindle in a slide guide for focus adjustment; spot and flood position indicator on housing side; an Alzak <sup>®</sup> aluminum spherical reflector on a movable carriage; pivoting reflector mechanism for easy relamping with positive locking action for proper reflector alignment; a wooden grip handle; color frame grooves; 2 safety chain loops; a mogul bi-post socket for a Tungsten - Halogen 5000 watt T-17 lamp; a 16" Pyrex <sup>®</sup> heat resisting Fresnel lens with black ceramic risers; a hinged rear door for relamping; and 36" asbestos covered leads properly stripped and tinned and fitted with a 50 ampere, \_\_\_\_\_ pole, male \_\_\_\_\_ connector. Each unit shall be equipped with a "C" pipe clamp.

Using an DPY 5000 watt, 300 hour lamp, this unit shall produce a field angle of 16 degrees in the spot position and 30 degrees in the flood position which equals or exceeds 1,134,900 candlepower in the spot position and 157,100 candlepower in the flood position.

Units shall be Kliegl #44Q16 Quartz Fresnel Spotlights



LAMP  
DPY 5000W 300HR

lighting

NEW YORK  
LOS ANGELES

JOB

CAT. # 44Q16

S.O. #

**KLIEGL BROS.**

SCALE  $\frac{1}{8}" = 1"$

REF.

DESCRIPTION

DATE 11/30/70

DATE

44Q16 16" FRESNEL SPOTLIGHT  
QUARTZ-IODINE LAMP SERIES

ORIG. DWG. #  
F70-1022

JOB DWG. #