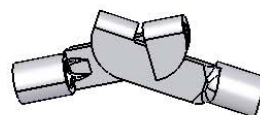
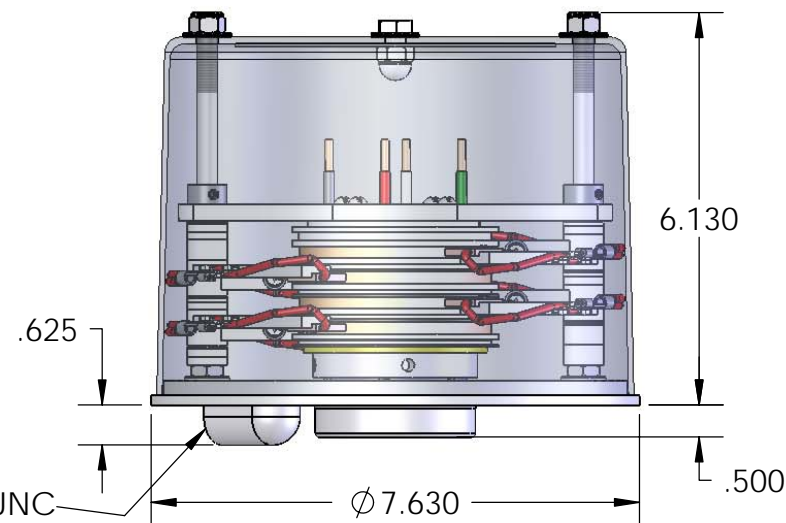


ITEM NO.	PART NUMBER	DESCRIPTION	QTY.
1	RCFA008766A	Base Casting	1
2	RCFA008084V0	Nylon Bearing, 0.88" Long	1
3	RCFA00088Y6E	5/16"-18 x 6.13" Stud	2
4	P5233118	5/16"-18 Jam Nut, Plated	2
5	P53131	5/16" Flat Washer, Plated	2
6	RCAA008867P	Brush Assembly, 20amp.	4
7	RCPA008066	Outboard Bearing	1
8	RCPA008546	1/32" Nylon Spacer	6
9	RCPA008548	1/8" Nylon Spacer	7
10	RCPA008549	5/16" Nylon Spacer	3
11	RCPA008547	1/16" Nylon Spacer	3
12	P132031AL	Alum. Set Collar	2
13	RCPA008223	Nylon Rub Disk	1
14	P53531SS	Washer, Neoprene Back	3
15	P5253118NY	Nylon Acorn Nut	1
16	P511311805NY	Nylon Screw	1
17	P5223118	5/16"-18 Lock Nut	2
18	RCFA011064-H	5.50" Spun Alum. Cover	1
19	RC861-20-4	Core Assembly	1



Knife Disconnects



Torque Lug is 1/2"-13 UNC

Center Bore Fits Shafts Up To 1.5" Dia.



PROPRIETARY AND CONFIDENTIAL
THE INFORMATION CONTAINED IN THIS
DRAWING IS THE SOLE PROPERTY OF
UNITED EQUIPMENT ACCESSORIES. ANY
REPRODUCTION IN PART OR AS A WHOLE
WITHOUT THE WRITTEN PERMISSION OF
UNITED EQUIPMENT ACCESSORIES IS
PROHIBITED.

For Customer Attachment

Pack Kit: SK1504A20

- (4) C027-12 Black Set Screw Connectors.
- (4) T099-10 Large Knife Disconnects.
- (4) RCFA008931 Red Vinyl Sleeves.
- (2) P4270550 Medium Cable Ties.
- (1) RC8460A Installation Instruction Sheet

1.5" BORE, 4-CIRCUIT, 20A,
600V, ENCLOSED SLIP RING

DWG. NO.

GS15A4-20-6

REV:

0

SCALE: 1:4

SHEET 1 OF 1