



## Setting Up the Capture Executable File

### Setting Up Visualizer between Console and Computer:

1. With both the console and the computer turned off, set up a network cable from your computer to a network switch and then a network cable from the switch to the console.
  - With an Eos console, you can run the network cable directly to one of the four network ports on the console (internal switch).
  - A direct run from a computer to an Ion console will occasionally work as well. Use a short network cable or crossover cable.
2. Turn on the console and the computer. When turned on together, there is a better chance of the network syncing.
3. Launch the Capture executable file.
4. One or two 'Startup Error' windows may appear. Basically hit Enter to bypass each and continue.
  - First popup window: "Failed to migrate known information from earlier version of Capture. You must run Capture as an administrator to complete this task." Press Enter or click OK.
  - Depending on the graphics card in your computer, a second window: "Your hardware and driver configuration is not Capture Polar graphics capable. See About for more details. Revert to Capture 2005 graphics in Options to suppress this warning." Press Enter or click OK.
5. Consult the training workbooks (Appendix 1) for the patch. A default 1-to-1 patch will at least give you channels 1 – 4 to test both Foundations and Intermediate applications. Bring up channels 1 – 4 to full; the specials on the bass, lead piano and drums should come up.

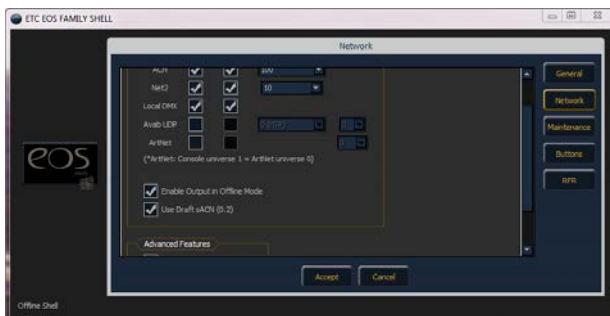
## Setting Up the Capture Executable File

### Setting Up Visualizer between Two Computers:

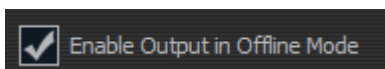
1. With both computers turned on, set up a network cable from one computer to the other.
2. On the **Visualizer Computer**, launch the Capture executable file.
3. One or two 'Startup Error' windows may appear. Basically hit Enter to bypass each and continue.
  - First popup window: "Failed to migrate known information from earlier version of Capture. You must run Capture as an administrator to complete this task." Press Enter or click OK.
  - Depending on the graphics card in your computer, a second window: "Your hardware and driver configuration is not Capture Polar graphics capable. See About for more details. Revert to Capture 2005 graphics in Options to suppress this warning." Press Enter or click OK.
4. On the Offline Editor Computer Launch Eos Family



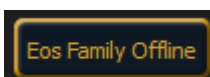
5. Click on **Settings** and select **Network**



6. Make Sure Enable Output in Offline Mode is checked

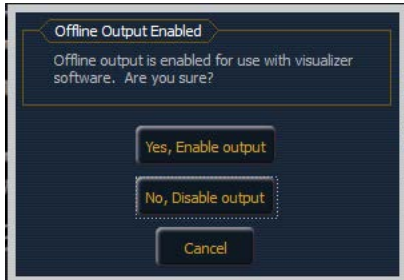


7. Click Accept and Eos Family Offline



## Setting Up the Capture Executable File

### 8. Select Yes, Enable output



### 9. Consult the training workbooks (Appendix 1) for the patch. A default 1-to-1 patch will at least give you channels 1 – 4 to test both Foundations and Intermediate applications. Bring up channels 1 – 4 to full; the specials on the bass, lead piano and drums should come up.

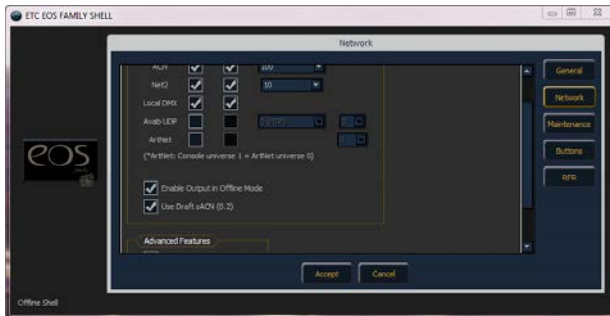
## Setting Up Visualizer on a Single Computer:

1. Launch the Eos family Offline Software and then the Capture executable file.
2. With the Capture executable file, one or two 'Startup Error' windows may appear. Basically hit Enter to bypass each and continue.
  - First popup window: "Failed to migrate known information from earlier version of Capture. You must run Capture as an administrator to complete this task." Press Enter or click OK.
  - Depending on the graphics card in your computer, a second window: "Your hardware and driver configuration is not Capture Polar graphics capable. See About for more details. Revert to Capture 2005 graphics in Options to suppress this warning." Press Enter or click OK.
3. Exit Eos Family Offline to the shell display.
4. When all boxes turn from gray to gold, click on Settings.

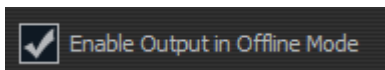


## Setting Up the Capture Executable File

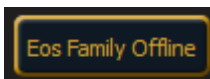
5. Select **Network** on the right hand side.



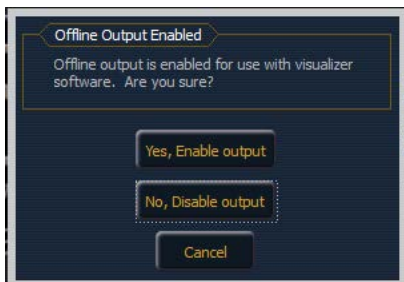
6. Make Sure Enable Output in Offline Mode is checked



7. As of this writing, Capture only reads the draft (0.2) version of sACN - the option to use draft sACN should be checked as well.
8. Click Accept and Eos Family Offline



9. Select Yes, Enable output






10. It is normal to see a slow refresh rate and occasional dropouts while outputting offline. You will be asked to confirm this option each time Offline is launched.
11. Consult the training workbooks (Appendix 1) for the patch. A default 1-to-1 patch will at least give you channels 1 – 4 to test both Foundations and Intermediate applications. Bring up channels 1 – 4 to full; the specials on the bass, lead piano and drums should come up.



# Setting Up the Capture Executable File

## General Visualizer Controls:

1. You can change the view by clicking on the  wrench in the lower right corner. We recommend the perspective view.
2. In perspective view, the  icon in the lower right will spin the view around and the large  square/small square icon will zoom in and out.
  - For the intermediate file, you will need to zoom out to see all the movers on the FOH truss.

## Troubleshooting:

1. Seeing Red? If, in the Capture file, you accidentally click on something and it becomes highlighted in red, simply click in the black area outside of the stage space to deselect the item.
2. The above setup assumes the computer has its Internet Protocol (TCP/IP) Properties set as Obtain an IP address automatically. The console will also be set up as a DHCP server. If the console and computer are not talking to one another, you may need to set the computer IP address:
  - Change your computer IP Address to 10.101.1.110
  - Change your Subnet Mask to 255.255.0.0.
  - Change your Gateway to 10.101.1.110.

You do not want the IP address of the computer to conflict with that of the console. With the console turned on, press the **[About]** button. The IP address will be displayed in the lower left corner of the About window.

3. In more current OS machines, check that the Windows Firewall is either turned off or that you allow access for the Capture executable.
4. Full screen option versus small windows option in Offline: If you would like to restore your windows down in size rather than have the full screen option, open settings. Under the General tab, uncheck the Fullscreen Offline Editor option.

