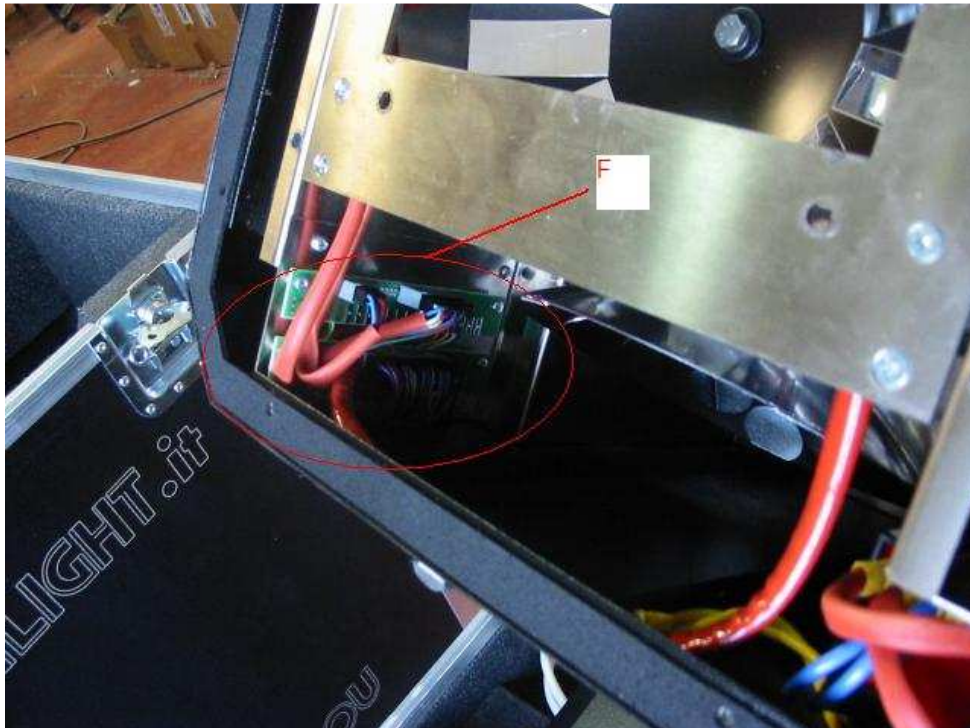


Install/Replace "Super-Nova" lamps

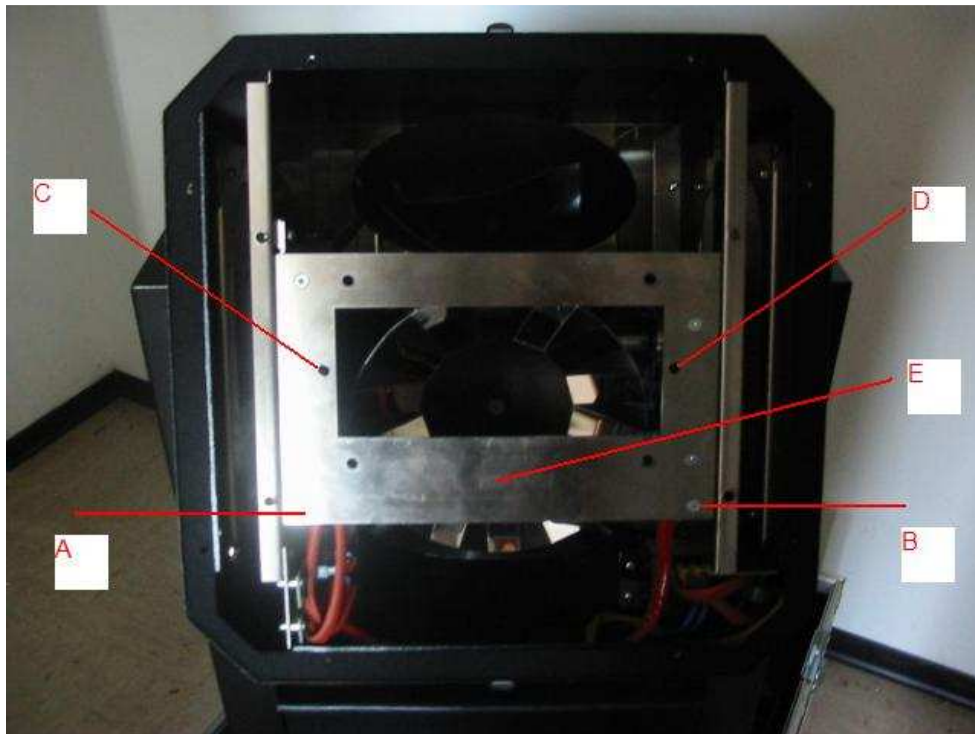
1. Remove the rear panel of the head by unscrewing the 8 screws. The screws stay attached to the back plate so you might need to "encourage" the rear panel to pop free with a screwdriver



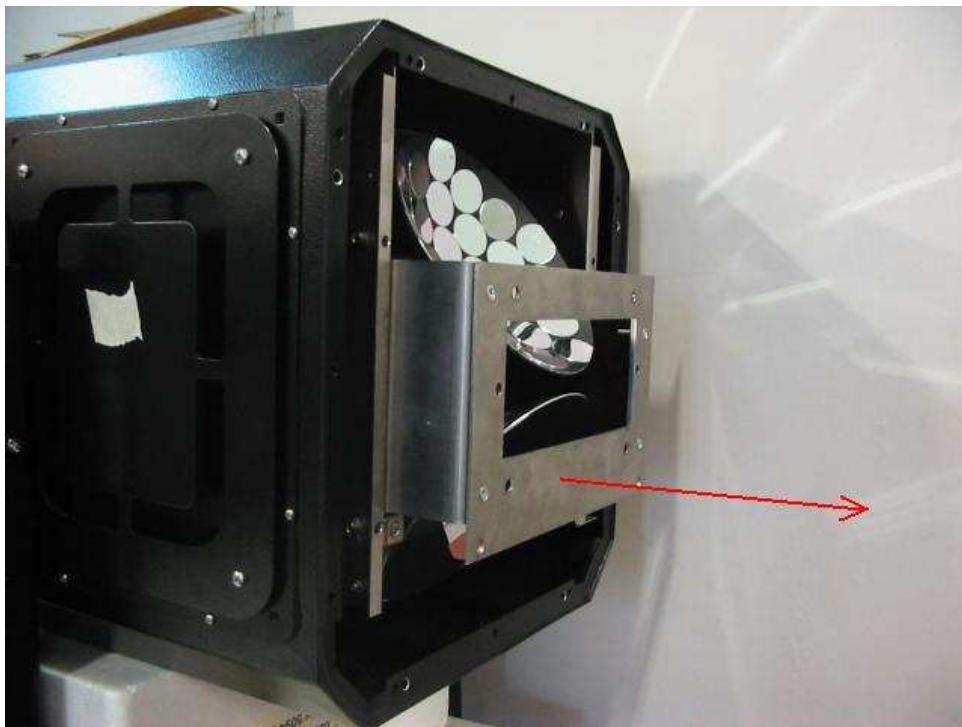
2. Disconnect the 3 connectors "F" by gently pulling the black connectors out of the grey housing



3. While the unit is blocked in the horizontal position, unscrew screws "A" and "B"



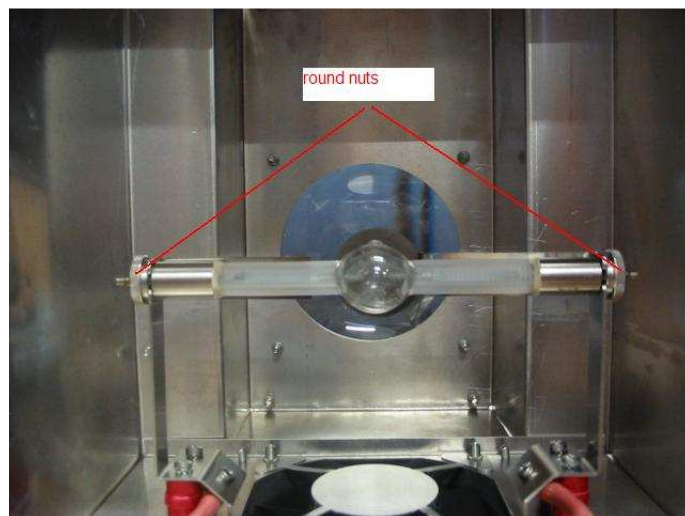
4. Slide the whole reflector system out



5. Place the reflector system on the table as shown in the picture

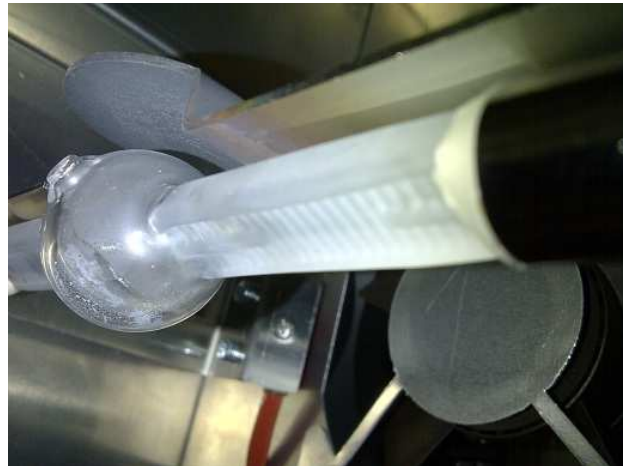


6. To remove the bulb, gently rotate the round nuts anti-clockwise.

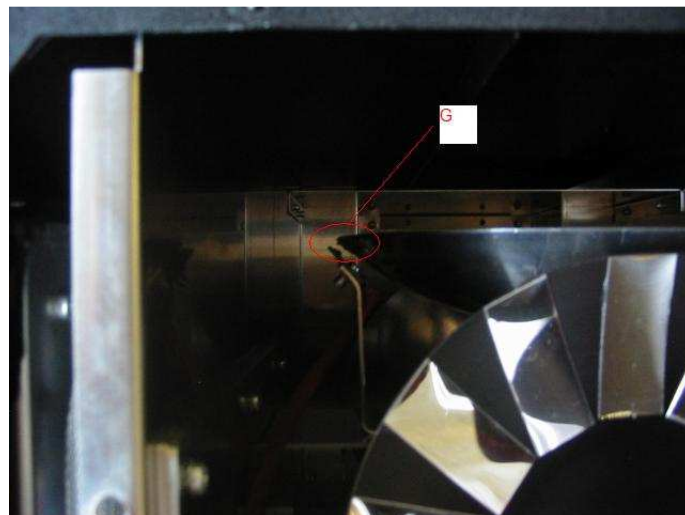


Don't touch the lamp glass with bare hands

7. When you replace the lamp align it as shown, and tighten the two round nuts without rotating the lamp



8. Slide the reflector system in and check that none of the reflectors are bent: rotate each individual reflector 360° to verify that the distance "G", is almost constant;

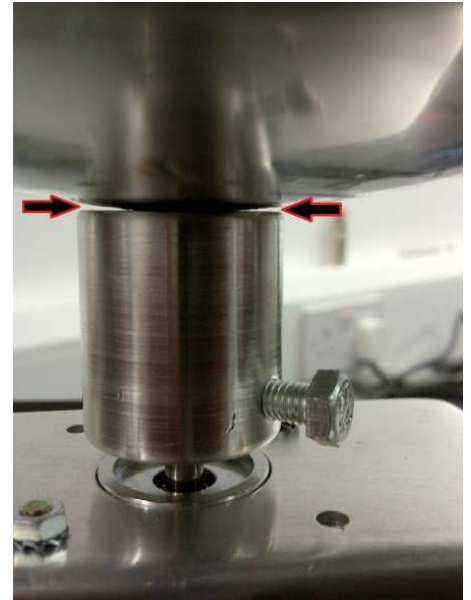


None of the reflectors must touch the homing sensor when rotating

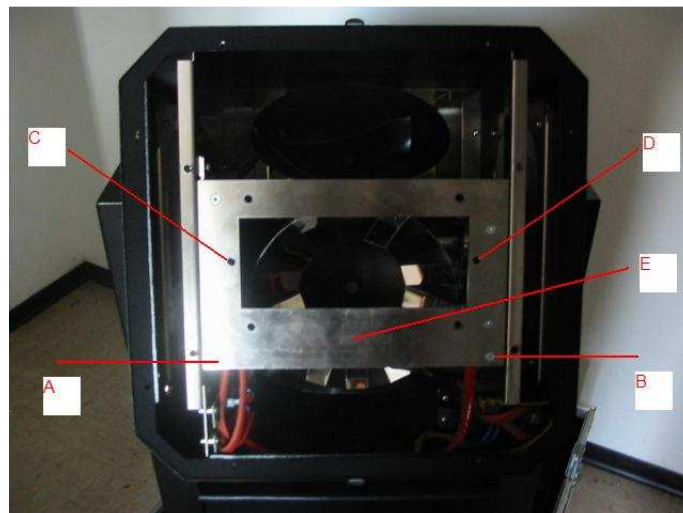
9. If one or more reflectors are touching the sensor, remove the reflector system and bend the reflectors a bit by lifting up and rotating.

The easiest way to get quick results is to look at the reflector from the side. Make sure that the gap, indicated by the arrows in the picture, is consistent as you rotate the bowls.

Replace the unit and re-check that they rotate without touching the sensor. You may need to bend the sensor holder a bit to increase the distance.



10. Screw the "A" and "B" screws back



11. Re-connect the 3 connectors

12. Replace the rear cover paying attention that the 2 rear pins, match up with holes "C" and "D"

