



SPECTRUM MANUFACTURING INC.
88 Horner Avenue, Toronto, ON. Canada M8Z 5Y3
July 2, 2015

Technical Bulletin No. 42

- Product Name: Color/Studio Force 72, Color/Studio Force 48, Color/Studio Force 12
(**Excluding:** Studio Force D XT 12)
- Spectrum Model: 622-1000 series; 622-2000 series;
621-1000 series; 621-2000 series; 621-3000 series
(**Excluding:** 621-5000 series - 5001/5002/5012)
(**Excluding:** 621-6000 series – 6002/6005/6012/6022/6032)
- Serial Number Range:
- 622-1000 series – serial numbers lower than 306081651
 - 622-2000 series – serial numbers lower than 306083501
 - 621-1000/2000/3000 series – serial numbers lower than 306082129

Description:

- **Upgrade Procedure: Spacer Plates & Parallel 5V Power/Data Harness**

Reference:

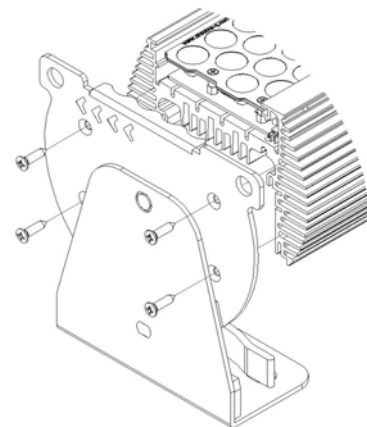
- Technical Bulletin 41 replaces Technical Bulletin 30.1 to include the Studio Force range but exclude the Studio Force D XT 12

Tools:

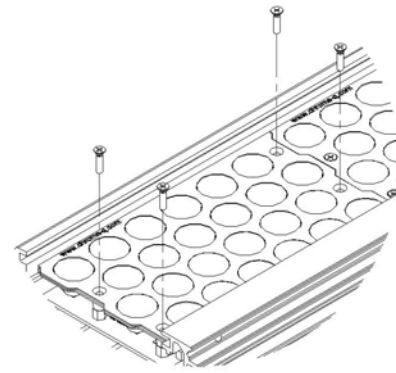
- Electric Screwdriver with PH#1 and 5.5 in/lb torque.
- Pneumatic Screwdriver with PH #2 and 20 in/lb torque.

SPACER PLATES INSTALLATION:

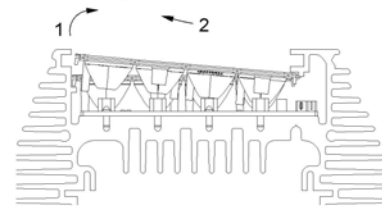
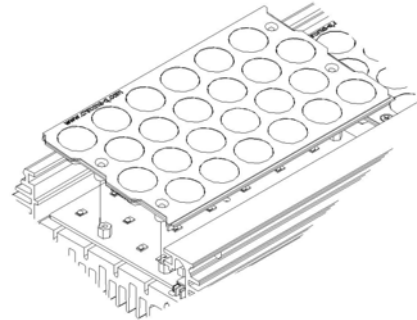
1. Remove the end plates on both ends of the fixture by unscrewing the 4 x M4.8 screws.



2. Remove the 4 x M3 flat head screws that hold the lens plates in place.

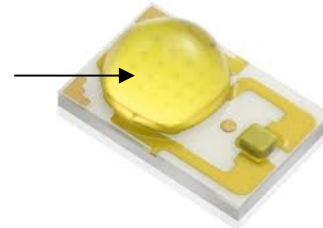


3. With extreme care remove the lens plates from the unit by pulling the first one with minimal movement towards the end. Disengage the side grooves of the lens holders and then slightly tilt up the edge marked www.chroma-q.com avoiding contact with the LED's. Use same steps to remove all the plates from the unit.

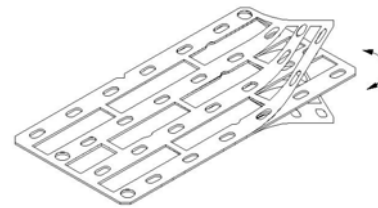


Please use extreme care to avoid hitting the primary optic of the LED's.

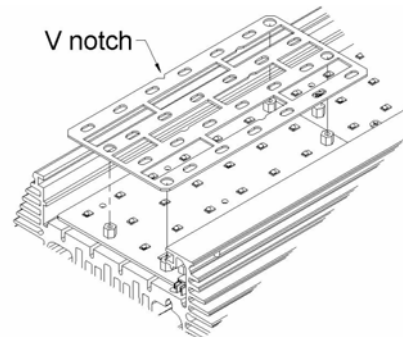
Hitting the primary optic might result in the partial delaminating of the LED and will result in failure in the field.



4. Peel the protective paper if applicable, on both sides of the **spacer plate** before using it.



5. Place each spacer plate on top of the LED's PCB by matching the clearance holes with the standoffs. The **notch** is towards the narrow edge frame of the fixture. The spacer must not interfere with any components on the LED board.



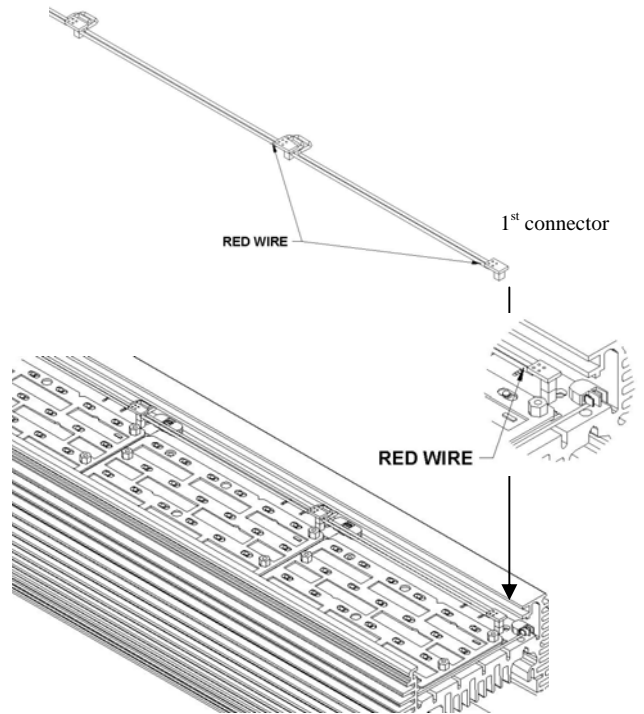
PARALLEL 5V / DATA HARNESS INSTALLATION:

6. Plug the first connector of the **Parallel 5V/Data Harness** on the **J3 header** of the first LED board. (Addressing board end of the fixture)

Note:

The 1st connector is marked with a silver dot.

Ensure that the wires of the same color are on the same side. The **RED WIRE** is always towards the LED side of the fixture.

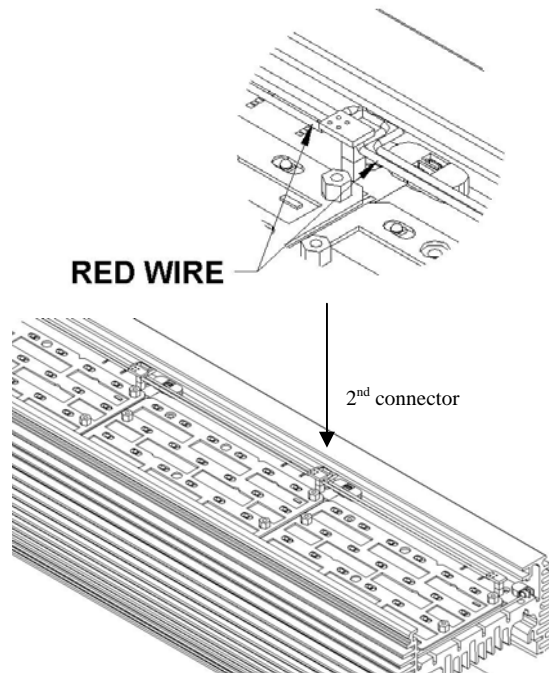


7. Plug the next consecutive harness connectors to the corresponding LED boards.

Note:

Ensure that the wires of the same color are on the same side. The **RED WIRE** is always towards the LED side of the fixture.

8. Continue plugging all the consecutive harness connectors to the corresponding LED boards.



PUT BACK LENS PLATES & END PLATES:

9. Position the lens holder back on the unit reversing the movements from step 3. Start in the center of the unit and add the lens holders towards the edge on both sides. The mark www.chroma-q.com must be positioned towards the narrow edge frame of the unit.

Avoid hitting the primary optics of the LED's.

10. Nudge gently and carefully to match the side grooves of each lens holders. When in position, match the posts of each lens holder with the standoffs on the unit then fasten each lens holder with the M3 screws as they are set.
11. Put back the end plates to close the unit by tightening the M4.8 screws.

